



The International School of Prague seeks new
FACULTY
for the 2022/23 academic year



**Inspire
Engage
Empower**

All learners to be

**Curious
Competent
Compassionate
Changemakers**

WHO ARE WE LOOKING FOR?



Are you an innovative, inspirational and empathic educator with an unwavering commitment to Inspire, Engage, and Empower all Learners?

The International School of Prague (ISP) is seeking educators who will help ISP achieve its ambitious aspirations as the leading school in Europe known for our impactful programs, practices, and people. The preferred candidate will provide student-centered experiences that **Inspire, Engage** and **Empower** ALL learners to be **Curious Competent Compassionate Changemaker**.

We seek experienced international educators who are committed to nurturing a diverse and inclusive community that embraces exciting educational possibilities. Most importantly, these colleagues will educate with empathy, care, and authenticity while working in a dynamic and agile environment.

For further details please read the job description for the respective vacancy posted on our [website](#).

**Join one of the most innovative
and respected independent schools
in Europe!**



WHO ARE WE?



Progressive, innovative, and student-centered, ISP has thoughtfully built a learning culture based on an inspiring mission, curious students, expert faculty, an engaged community, and the drive to provide an outstanding, future-oriented education.

Founded in 1948, ISP provides an authentic global education to almost 900 students from over 60 nationalities. No one nationality dominates the student population at ISP, and the community celebrates this diversity, as well as the accomplishments of the school. Families applaud ISP for creating a *“positive and diverse culture that really does empower students and teaches them to be lifelong learners.”*

We are a friendly and open-minded school and have an international team of Faculty and Staff, with 23 nationalities represented. We benefit from purpose-built facilities, nestled in the picturesque Divoká Šárka nature reserve, and a newly launched dedicated Learning Innovation Hub, a contemporary new environment pointing to the future of learning.



STUDENTS
ENROLLED

852

EARLY CHILDHOOD
FOUNDATIONS

50

ELEMENTARY
SCHOOL

271

MIDDLE
SCHOOL

231

UPPER
SCHOOL

300



TOTAL ISP
CAMPUS SURFACE

more than

65.000 m²

BUILDING AREA
nearly

14.000 m²

OUTDOOR AREA
more than

51.000 m²



ISP AVERAGE
INTERNATIONAL
BACCALAUREATE
SCORE

35



FACULTY & STAFF
NATIONALITIES

23



TEACHER-STUDENT
RATIO

1:8



FACULTY
WITH ADVANCED
DEGREES

**over
70%**



STUDENT
NATIONALITIES

60



48 LANGUAGES SPOKEN ACROSS ISP

AFRIKAANS • ALBANIAN • ARABIC • ARAMAIC • ARMENIAN • AZERBAIJANI
BULGARIAN
CATALAN • CHECHEN • CHINESE • CROATIAN • CZECH
DANISH • DARI • DUTCH
ENGLISH
FINNISH • FRENCH
GERMAN • GEORGIAN • GREEK
HAITIAN • HEBREW • HINDI • HUNGARIAN
ITALIAN • INDONESIAN • IRISH
JAPANESE
KOREAN • KYRGYZ
LATVIAN
PASHTO • PERSIAN • POLISH • PORTUGUESE
ROMANIAN • RUSSIAN
SERBIAN • SLOVAK • SPANISH • SWEDISH
TAMIL • TAGALOG • TURKISH
UKRAINIAN • URDU
VIETNAMESE

WHAT DOES IT MEAN TO LEARN @ISP?



At ISP, we are clear about what we mean by learning, how that learning best happens, and the kind of lifelong learners we nurture. Please take a look at [stories here on our website](#) to see what Learning@ISP looks like in action.

We have a warm, welcoming community and we are a place of possibility where curiosity drives what and how we learn – meaning that inquisitive minds are what we look for most when we recruit.

PROFESSIONAL LEARNING

ISP's enthusiasm for professional development and commitment to innovation in education means the school welcomes educational experts from around the world to speak to and work with our faculty, staff and community. See some of our visitors or listen to their Edge in Education [sessions](#).

DEFINITION OF LEARNING: *what does it mean to learn at ISP?*

Learning is a transformative process that:

- › **Builds** on what we know and can do,
- › **Deepens** what we understand, and
- › **Changes** who we are.

LEARNER PROFILE: *ISP learners are...*

Curious
Competent
Compassionate
Changemakers

ISP LEARNING PRINCIPLES *Learning best happens when...*

Learners feel
a sense of
safety
and
belonging



Learners' **curiosity**
drives what
and how
they learn



Learners know
what they're
learning
and **why** it is
significant



Learners
know **where**
they are as
learners
and how to
go further

Learners
apply their
learning in
diverse and
challenging
contexts



Learners
consider and
connect
complex
ideas



Learners **persist**
with relevant
and rich
challenges

Learning Principles in Action



Learners' **curiosity** drives
what and how they learn

Ellington Energy at ISP
Read more





Learners know **what** they're learning and **why** it is **significant**

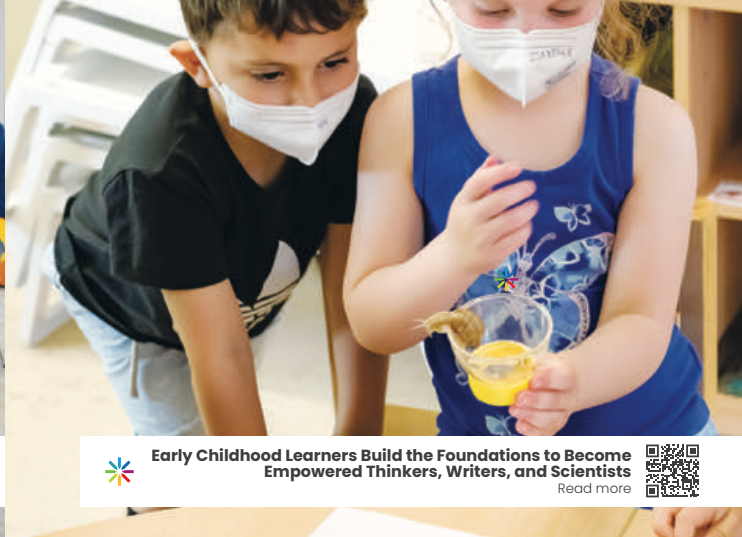
Learning Principles in Action
(continued)



 **TEDx Youth 2021 @ ISP**
Read more 



Learners know **where** they are as learners and how to **go further**



 **Early Childhood Learners Build the Foundations to Become Empowered Thinkers, Writers, and Scientists**
Read more 



Learners **persist** with relevant and rich **challenges**



 **Duke of Edinburgh Adventures@ISP**
Read more 



Learners consider and **connect complex** ideas



 **Ecological Art and Artistic Scientists**
Read more 



Learners **apply** their learning in **diverse** and challenging **contexts**



 **Curious Coders, Designers, and Detectives**
Read more 



Learners feel a sense of **safety** and **belonging**



 **Starting a New School Year: Calm, Curious, & Connecting**
Read more 

WHERE ARE WE LOCATED?



Prague, capital city of the Czech Republic, is bisected by the stunning Vltava River. Known as “the City of a Hundred Spires,” Prague is known for its Old Town Square, the heart of its historic core, with colourful baroque buildings, Gothic churches and the medieval Astronomical Clock, which gives an animated hourly show.

The city ticks every box on the European “must-have” list for travellers: fascinating history and architecture, dynamic art and music scenes, delicious local food and drink, and affordable prices. Prague appeals to everyone as it has developed into a vibrant, modern, cosmopolitan capital city, attracting travellers and residents alike. Prague was ranked by Time Out as the seventh-best city to live in the world and considered one of the safest cities in the world according to the Global Peace Index.



HOW DO YOU APPLY?

Interested qualified candidates should apply online at **ISP website**

A complete application includes:

- Cover letter expressing interest in this position at ISP and a short statement of educational philosophy
- Up-to-date resume or CV
- Contact information for at least three current professional referees (one of which should be, if possible, the direct supervisor of the applicant's current organization)

The deadline to submit applications is available on the ISP website. Candidates should note, however, that in the event an outstanding applicant is identified early in the search process, ISP reserves the right to move forward with this appointment. For this reason, it is essential that interested candidates apply as soon as possible.

